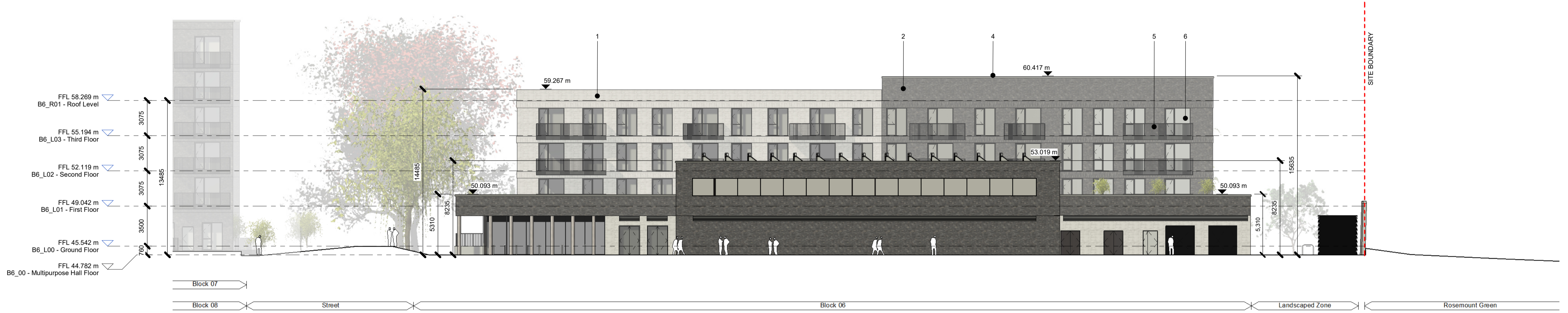


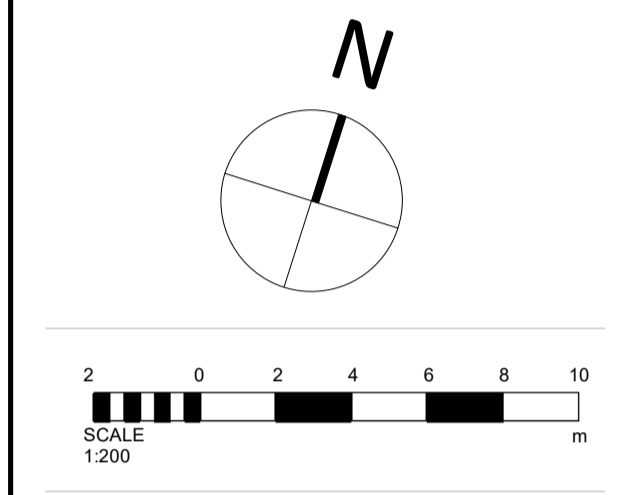
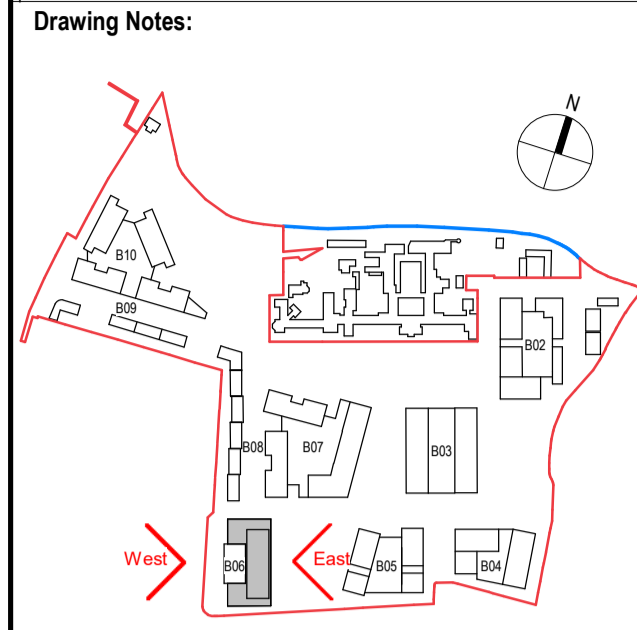


GA East Elevation
1 : 200



GA West Elevation
1 : 200

Notes:
 - Do not scale from this drawing. Use figured dimensions in all cases.
 - Verify dimensions on site and report any discrepancies to the Architect immediately.
 - This drawing is to be read in conjunction with the Architect's Specification.
 - © This drawing is copyright and may only be reproduced with the Architect's permission.



- Material Legend**
- 01 SELECTED BUFF BRICK
 - 02 SELECTED DARK BRICK
 - 03 SELECTED RED BRICK
 - 04 SELECTED METAL CAPPING
 - 05 SELECTED BALCONY AND RAILING
 - 06 SELECTED DOORS AND WINDOWS

| Rev. | Date | Drawn | Details of Issue / Revision |
|--------|-----------|-------|------------------------------|
| P3 S-1 | Sept 2024 | KP | Part 10 Planning Application |

Dartry Mills,
Dartry Road
Dublin 6,
D06 Y0E3

T: +353 (0)1 498 7000
W: www.reddyarchitecture.com
E: info@reddyarchitecture.com

Applicant Details:
Dún Laoghaire-Rathdown County Council

Agent Details:
Land Development Agency

Project Details:
**Proposed Part 10 Residential Development,
 Dundrum Central Development,
 Dundrum Road,
 Dublin14**

Drawing Title:
Block 06, GA Elevations 01

| | | |
|---------------------------------|------------------------------------|---------------------------------|
| Job No. P19-233D | Sheet Size: A1_Landscape | Scale @A1: 1 : 200 |
| Issue Date: Sept 2024 | Drawn By: K. Potocka | Reviewed By: R. Quinn |

| | |
|---|---|
| Status P3 | Purpose of Issue Part 10 Planning Application |
| Project - System - Spatial Zone - Level - Type - Originator - Role - Number DCD-02-B06-ZZZ-DR-RAU-AR-2601 | Revision P3 S-1 |